

Taal: Engels



Handleiding

B TEC droogstation voor lakstalen
BT ST 01

MSH equipment
Appelmarkt 7
1681 PE Zwaagdijk-Oost
Tel: 0228-561100
Fax: 0228-561112
Mail: info@msh-equipment.nl

Website: www.msh-equipment.nl

Declaration of conformity according to DIN EN 45014

Manufacturer: B-TEC GmbH
Zunftweg 6-8
D-31303 Burgdorf / Ehlershausen



Herewith, we declare that the machines and marketed models described in the following conform in conception and in design to the relevant fundamental safety and health requirements of the applicable EU directives.

All of our manufactured or assembled parts conform to the listed regulations.

If you change the machine without our explicit agreement, this declaration will be herewith invalidated.

Product type: Paint-sample dryer

Type designation: **ST-01**

Serial-nr:

Construction year: 2013

The following harmonising standards have been used:

- Safety of machinery, equipment and facilities: **CEN EN 12100-1 / CEN EN 12100-2 / CEN EN 14121-1**
- General rules and safety requirements for pneumatic-systems: **DIN EN ISO 4414**

Special national norms are applied:

- Safety- and healthsigns at workplace: **BGV A8**

Technical Parameters:

Rated voltage:	230 V
Rated frequency:	50/60 Hz
Rated power input:	350 W
Protection class:	I
Degree of protection:	IPX0

Tested according to: **EN 60335-1/A2:2006, EN60335-2-30/A2:2007, EN50366/A1:2006**

This EC-Attestation of Conformity is issued on a voluntary basis according to the Low Voltage Directive 5006/95/EC relating to electrical equipment designed for use within certain voltage limits. It confirms that the listed equipment complies with the principal protection requirements of directive.

Responsibility for technical documents: Hans-Joachim Bödrich, Michael Bellroth

Address: Refer to manufacturer's address

Location/Date/Manufacturer's signature. :

Function of the signer: Managing director

Hannover, 01.03.2013

Table of contents

1. Important information	1
1.1 Explanation of the symbols.....	1
2. Technical description of the machine	2
2.1 Technical parameters	2
3. Safety regulations	3
3.1 Instructions, rules and information of the employers' liability insurance association	3
3.2 Safety- and advisory notes	4
4. Commissioning.....	5
5. Operating instructions	6
6. Care and maintenance	7
6.1 Replacement of emitter lamp tube.....	7
7. Wiring diagram	8

1. Important information



We thank you for your trust you gave to us by buying the paint-sample dryer "ST-01". At the rating plate at your dryer you will find the exact name and serial-number of your dryer for an uncomplicated service and shipment of spare parts.

The B-TEC paint-sample dryer has been built under highest quality standards for high reliability. Because of certain procedures there are places and parts that can't be protected without compromising the usability and function. Therefore we ask you to read this document carefully before using the dryer to reach maximum life and reliable operation.



Read this document carefully before commissioning and keep it for future reference!

The B-TEC devices and machines are only allowed to be used for the purpose explicitly described below. Any other use is in contrast with the regulations. The manufacturer cannot be held liable for damages resulting from such non-regulations use.



The B-TEC devices and machines are only to be used for the purpose explicitly described below!

The intended use is the drying of water-based paint sa patterns with infrared and air pressure. Improper use can endanger the health of the operator and of others and cause damage to the dryer itself or to other materials and assets.



Improper use can endanger the health of the operator!

1.1 Explanation of the symbols

Attention!



You will find this symbol whenever attention is drawn to situations in which danger to life can arise due to or during incorrect or improper operation. Pay special attention to these symbols and act carefully.

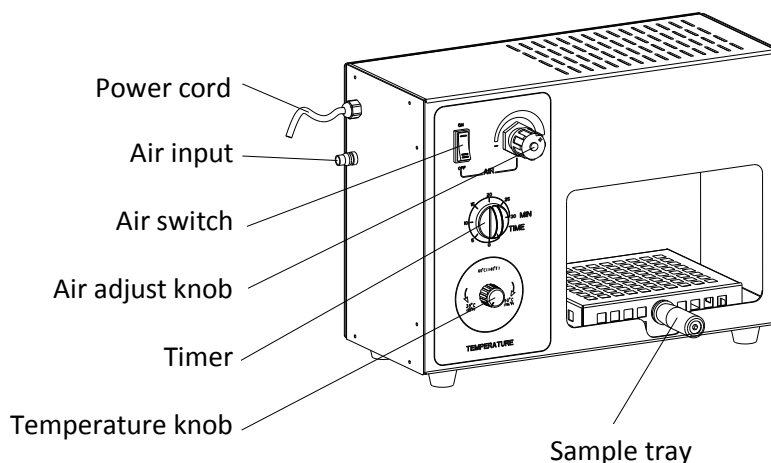
Notice!



You will find this symbol in the operating manual whenever your attention shall be drawn to correct work procedures, economic ways of operation or when the machines can be damaged by incorrect operation.

2. Technical description of the machine

The machine "ST-01" is made for fast drying of paint-samples with help of infrared-lamp and compressed air. Duration and intensity of drying can be adjusted continuously. The drying-time can be set by the timer and the temperature of the infrared-lamp may be determined by a controller in the range between 35°C and 90°C. The strength of the convective drying with compressed air can also be adjusted continuously by a control knob to the desired level. The compressed air and the infrared-lamp can be used together or separately.



2.1 Technical parameters

Model:	ST-01
Operating pressure compressed-air connection:	3-5 bar
Rated voltage:	230 V
Rated frequency:	50-60 Hz
Power of the emitter:	300 W
Rated power input:	350 W
Timing range of the timer:	30 min
Temperature:	30 °C
Weight:	6,1 kg
Size (BxHxD):	410x300x20 [mm]

- Technical changes and errors reserved. All pictures similar -

3. Safety regulations

The B-TEC GmbH machines are operationally safe and are constructed according to the state of the art. Due to the nature of the processes there are processes and parts that cannot be protected without impairing operability and functionality. Improper use of the dryer can endanger the health of operator and of other and cause damage to the dryer itself or to other materials and assets. B-TEC GmbH is not liable for any damages resulting from improper or incorrect use.



The manufacturer is not liable for damages caused by changes of the dryer that have not been specifically authorized by the manufacturer. The removal or alteration of safety devices immediately voids the warranty and is an infringement of European safety standards.



Read and follow this Instruction manual and the safety instructions carefully before commissioning!

3.1 Instructions, rules and information of the employers' liability insurance association



The following occupational safety regulations (BGV), rules (BGR), and information (BGI) have to be followed while using spray guns and part cleaning systems:

- BGV A1** "Principles and prevention", general rules
- BGV A8** "Safety and health protection warnings at the workplace"
- BGR 121** "Safety rules for air pollution control systems for the workplace"
- BGI 578** "Security by operating instructions"
- BGI 5127** " Avoidance of ignition from electrostatic charges"
- BGR 180** " Guidelines for facilities for cleaning parts with solvents"
- BGR 189** " Use of protective clothing"
- BGR 192** "Use of eye and face protection"
- BGR 195** "Use of protective gloves"
- BetrSichV** " Ordinance on Industrial Safety"

The source documents (with exception of the " Ordinance on Industrial Safety") can be obtained from: Carl Heymann Verlag KG, Luxemburger Str. 449, D-50939 Köln, Germany.

3.2 Safety- and advisory notes

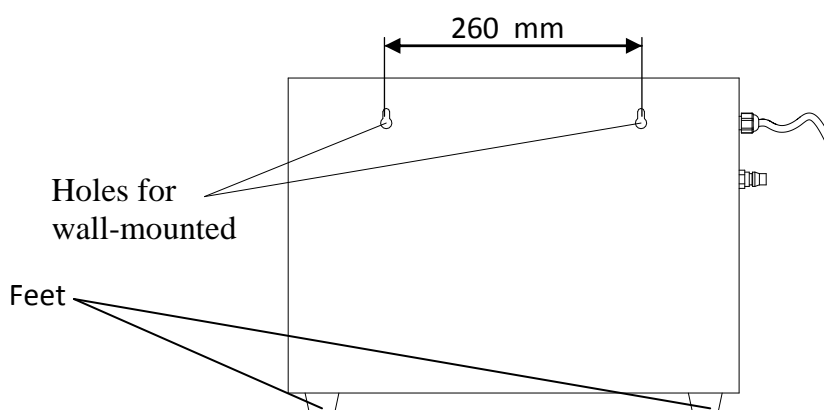
- Dryer is not ex-protected. Don't use it in an ex protection zone!
- Provisions have be made for protective clothing depending on how the machine is operated (gloves, eye protection, airway protection, whole body protection).



- Hands have to be washed thoroughly before eating or drinking
→ Danger of poisoning!
- Don't use this instrument when it is wet or damp. Water coming into the instrument may lead to electric shock or damage of the instrument.
- For outdoor use, please use the outdoor-specific cables marked with "W-A" or "W" for avoidance of electric shock.
- Don't cover the air vents → Overheating, combustion!
- Don't mount the machine on a wood-plate when wall-mounting → Overheating, combustion!
- Make use of local safety and accident prevention regulations always during the operation of the machine. These have to be observed and adhered to.
- The maximal concentration limits according to „TA-Luft“ have to be observed.
- A sufficient conductivity of the clothing (especially shoes) should be respected.
- Don't use this instrument in an explosive or combustible environment, otherwise it may lead to fire.
- In case the instrument is used in a spray booth, purify the in-house air first.
- Don't knock or crash the machine.
- Don't damage the infrared-tube (Knock with an hard object etc.)
- The machine has to be grounded by a specialist!
- Keep the operating manual available near to the machine.
- If the power cable is damaged, please ask the manufacturer, service provider or specialist to replace it to avoidance of any injury and damage.
- During the operation, don't touch live parts with your hands or other conductive objects (eg wrench).
- When you leave, ensure that the power is shut down and unplugged.
- Operation of this instrument should not be conducted by a person who has problem in self-control capacity, sense and metal capacities or lacks of experience (including children) except that they are supervised or guided by a responsible person.

4. Commissioning

The machine can be adapted flexibly to the conditions of the place of work. At the back of the ST-01, there are two holes in a distance of 260 mm for a wall mounting. To avoid overheating and fire, don't mount the device at wooden boards. If you don't wish wall-mounting, you can put the machine on a suitable table. Thereby take care of a stable stand.



Compressed air connection

One compressed air connection has to be provided by the plant, depending on the machine:



Operating pressure max. : 500 kPa (5 bar ; 72,5 psi)

Operating pressure min. : 300 kPa (3 bar ; 43,5 psi)



A pressure-regulating valve has to be used if the compressed air connections do not have the required operating pressures. **Use only dry and oil-free air!!**

Grounding

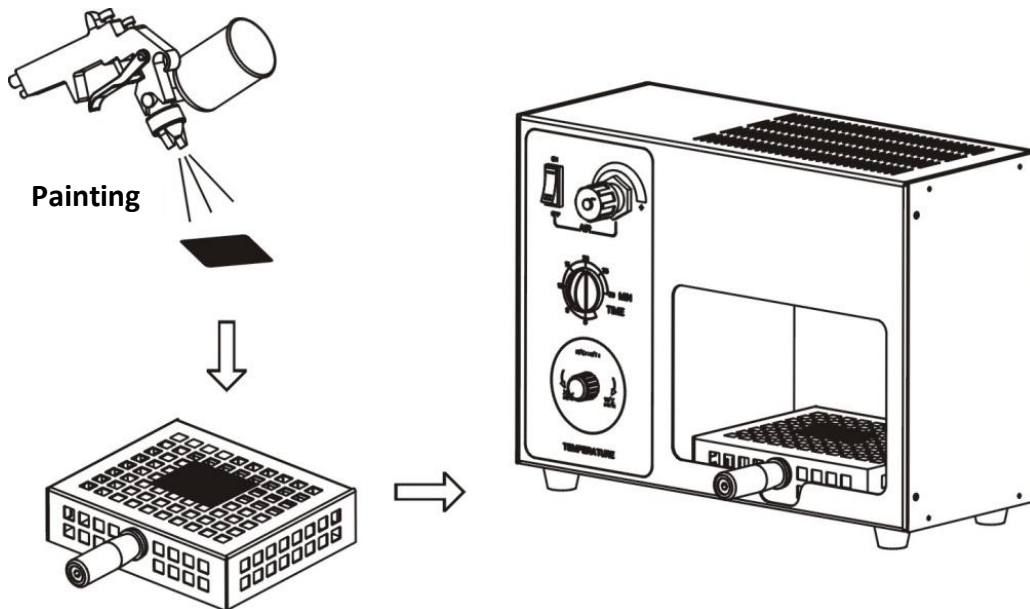


Device has a grounding cable! The device has to be grounded safely by a qualified person (e.g. electricians).

After proper installation and connection to the compressed air supply, the cleaning unit can be commissioned.

5. Operating instructions

Please follow the set-up sequence exactly!!



For water soluble paint

1. Set the timer at 10 - 20 minutes.
2. Turn on the air switch and adjust the air flow rate properly.

→ The sample will be dried by air.

Other paint

1. Set the timer at 10 - 20 minutes.
2. Adjust the temperature knob at 60 - 90°C.

→ The sample will be dried by heating.

When time is up, the dryer will stop automatically with a tinkle sound.

6. Care and maintenance

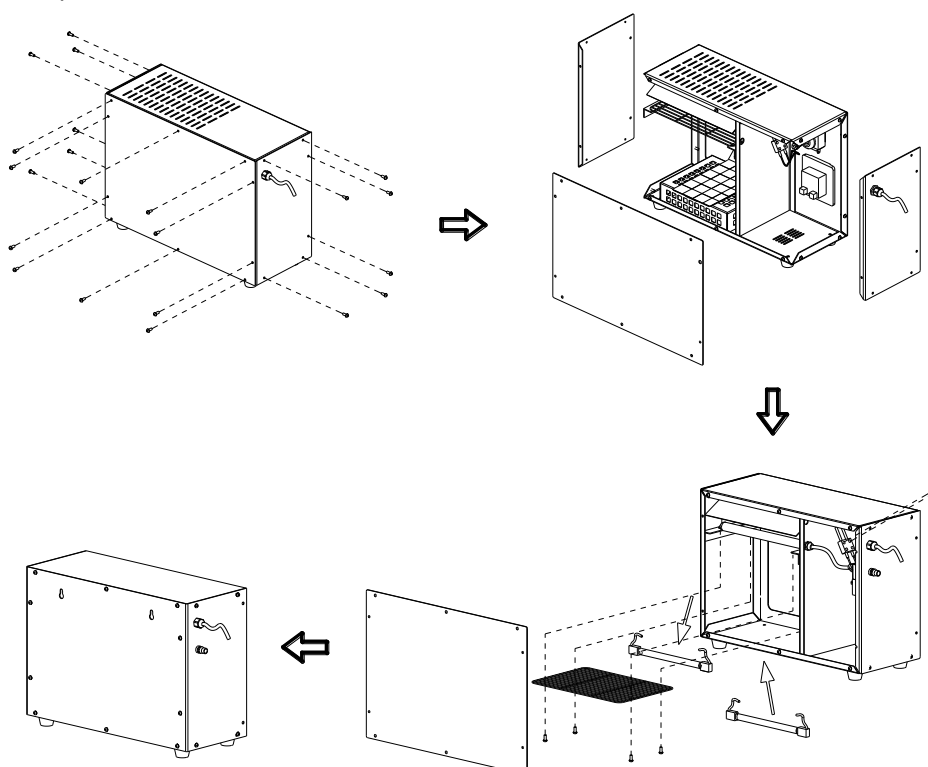


Before conduct care and maintenance, be sure that the machine is disconnected from the electricity supply and compressed air connection! Furthermore it has to be cooled down!

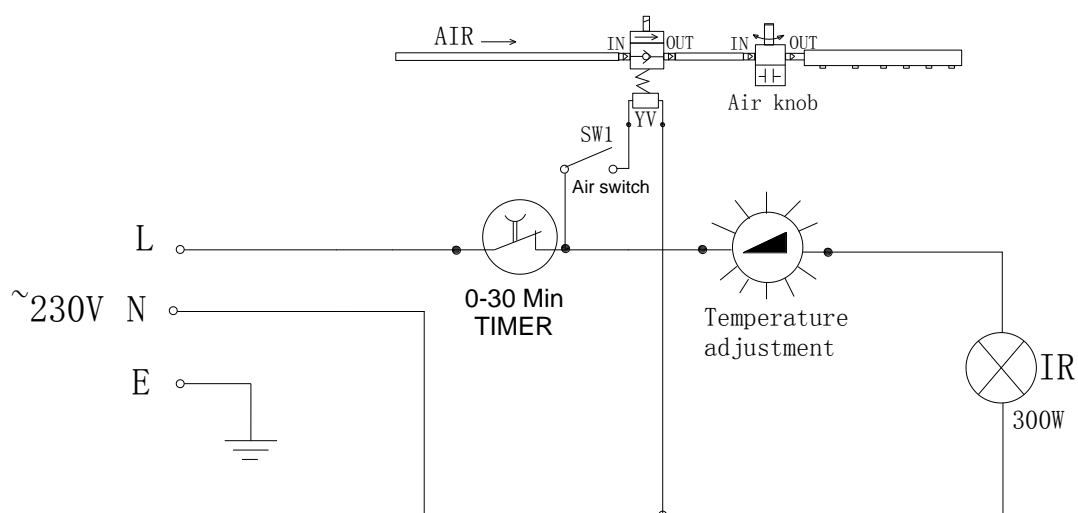
- Regular cleaning of tubes and reflector panel should be done by using a piece of soft cloth or cotton with alcohol. You are not allowed to start the lamp tube until the alcohol becomes volatile, otherwise it may lead to explosion.
- For replacement of lamp tube, ask the repair service center or a technician.

6.1 Replacement of emitter lamp tube

1. Shut down the power and disconnect the machine from the electricity supply.
2. Loosen the screws on the sides panel of the instrument and remove the side panel.
3. Loosen the screws of the protective grid in front of the emitter and take out the protective grid.
4. Loosen the two leads of the lamp tube and remove the tube.
5. Fix the new tube with same model number and wire the tube properly.
6. Use a piece of soft cloth or cotton to clean the reflector panel and the tube with alcohol. Don't continue operation, if the alcohol isn't evaporated completely.
7. Reintegrate the protective grid.
8. Refit the side panels.



7. Wiring diagram



Subject to technical changes.